

CERTIFICATE OF LOCATION OF GOVERNMENT CORNER

NORTH QUARTER Corner of Section 33, Township 108 N, Range 40 W, 5th P.M.

STATE OF MINNESOTA, County of MURRAY

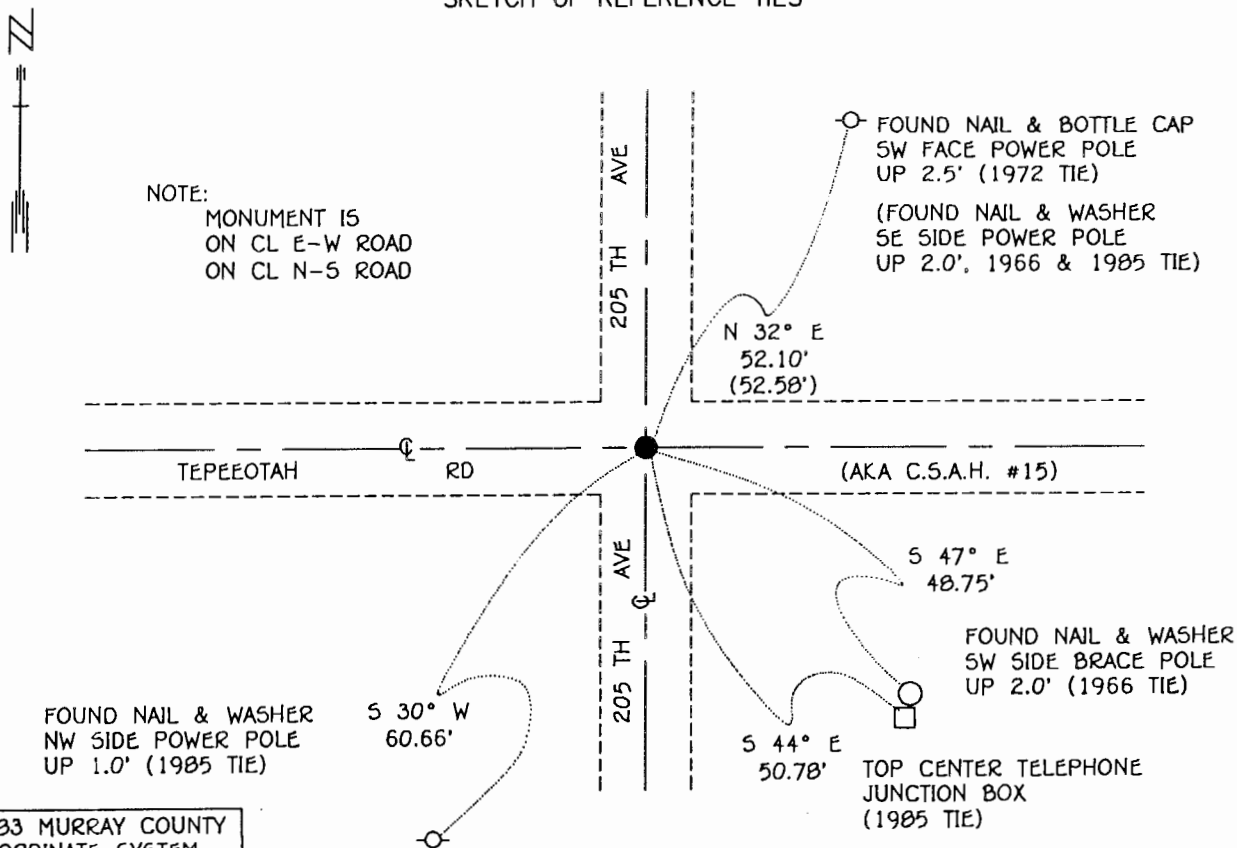
At the corner location shown on the sketch:

■ On 6-30-97 found a CONCRETE MONUMENT, DOWN 1.1', OVER POINTED STONE,
DATE DOWN 2.4'

■ left monument as found, lowered monument, removed monument (explain)

■ On 6-30-97 Placed a 3/4" x 12" REBAR WITH ALUMINUM CAP STAMPED
DATE "DNR SURVEY MARKER", DOWN 0.1', OVER CONCRETE MONUMENT

SKETCH OF REFERENCE TIES



NOTE:
 MONUMENT IS
 ON CL E-W ROAD
 ON CL N-S ROAD

1983 MURRAY COUNTY
 COORDINATE SYSTEM
 N = 200463.766
 E = 529756.416

BEARINGS OBSERVED WITH COMPASS

Statement of evidence relative to this corner location is on back of page.

JBM JUL '97
 WA501442

I hereby certify that this document and the data contained herein was prepared by me or under my direct supervision.

Bruce W. Sheppard 4/20/98
SIGNATURE DATE

License Number 17003

■ Land Surveyor, Professional Engineer
 County Surveyor, County Engineer

OFFICE OF THE COUNTY RECORDER
 County of MURRAY MAY 28 1998

I hereby certify that this document was filed in the Co. recorders office at _____ .M. on the _____ day of _____ A.D., 19____

County Recorder Janna V. Johnson
 By _____, Deputy
 DOCUMENT NO. _____

The DNR Bureau of Engineering contacted the following for survey information:

Minnesota Secretary of State's Office
Murray County Recorder's Office
Murray County Highway Engineer's Office
Lyle Moseng Land Surveying of Marshall
Rieke Carroll Muller Associates of Gaylord
Madsen Land Surveying, Inc. of Fairmont

- 1861 U.S. General Land Office notes obtained from the Secretary of State's Office show the corner marked with a wood post set in a mound of earth with pits.
- 1877 December, the plat of the Subdivision of the Northwest Quarter of the Northwest Quarter of Section 33, obtained from the County Recorder's Office, by S.P. McIntyre, County Surveyor, does not show this corner. No distances are shown on the plat but the following is noted:
see field notes recorded in Surveyor's Book
- 1877 December, Surveyor's Record Book A, page 34, obtained from the County Recorder's Office, contains the field notes for the plat of the Subdivision of the Northwest Quarter of the Northwest Quarter of Section 33, by S.P. McIntyre, County Surveyor. A chunk of coal buried by farmers is shown at corner. The only distances that are shown are along the north and east lines of the Northwest Quarter of the Northwest Quarter - both being 20.00 chains (1320.00 feet) long.
- No Date Surveyor's Record Book A, page 11, obtained from the County Recorder's Office, contains a survey, surveyor not indicated. Survey states that the Southeast Quarter of Section 28 was divided into the north and south half. A description of what was found or set at the north quarter corner of Section 33 is not given and no distances are shown to it.
- No Date Surveyor's Record Book A, page 21, obtained from the County Recorder's Office, contains a road survey, surveyor not indicated. Survey shows corner but a description of what was found or set is not given and no distances are shown to it.
- 1934 Surveyor's Record Book A, page 11, obtained from the County Recorder's Office, contains the following note by F.A. March about corner:
"Stone"- tack in corner fence post, southwest, 43.0 feet
- R.P. tack in corner fence post, southeast, 49.0 feet
- 1966 July, DNR Bureau of Engineering contracted N.C. Hoium and Associates Inc. of Coon Rapids, Minnesota, to survey property in Section 28. The DNR Bureau of Engineering's records of survey show that a nail was found at corner and replaced with a PK nail. The following ties are shown to corner:
at the intersection of roads north, south, east, and west
nail and washer in power pole, northeast, 53.43 feet
nail and washer in telephone pole corner, southeast, 48.80 feet
nail and washer in power pole, southwest, 59.77 feet
nail and washer in stop sign post, northwest, 35.35 feet

1972 July, Corner Tie Book, obtained from the County Highway Engineer's Office, shows a concrete monument at corner but does not indicate if it was found or set. The following ties are shown to corner:

- nail and cap in power pole, northeast, 52.05 feet
- nail and cap in TCT, southeast, 50.20 feet
- nail and cap in power pole, southwest, 60.18 feet

1985 January, a worksheet for a survey in the Northeast Quarter of Section 33 and field notes by Gary D. Martin, RLS #12697, obtained from Madsen Land Surveying Inc, show that a ½ inch rebar over a concrete monument was found at corner. The following ties are shown to corner:

- 2631.37 feet from the northeast corner of Section 33
- in line with the center line of township roads north and south
- on the center line of east-west County State Aid Highway 15
- nail and washer in power pole, northeast, 52.60 feet
- top dead center telephone pedestal, southeast, 49.93 feet
- nail and washer in power pole, southwest, 60.72 feet

1985 March, DNR Bureau of Engineering found a ½ inch diameter rod in area of corner. The area under the rod was NOT excavated because a verified position for corner was not needed. The 1972 ties to corner were found to check within 0.5 of a foot of the rod. The rod was also found to be:

- 2631.24 feet from the northeast corner of Section 33

1997 June 30, DNR Bureau of Engineering found a ½ inch diameter by 11 inch long rebar down 0.3 of a foot over a conic shaped concrete monument (7" top, 11" bottom, 10" high) down 1.1 feet over a pointed top stone down 2.4 feet at corner. Searched for and found record ties as shown on sketch of reference ties. The monuments were found to be:

- 2631.24 feet from the northeast corner of Section 33
- 2636.60 feet from the northeast corner of Section 32
- 3.11 feet north and 2.70 feet east of the lost position for corner

Analysis of the above information led the DNR Bureau of Engineering to conclude that the found rebar, concrete monument and stone mark the location of the corner. Discarded the rebar and set a DNR Survey Marker in its place.